

ACCESSORIES



LIPOKIT WITH SUCTION

Available different handpieces with suction insert. Cannulas differ for their length and calibre.



LIPOKIT WITHOUT SUCTION

Available different handpieces without suction insert. Cannulas differ for their length and calibre.



CANNULAS

Of different dimensions and calibres available upon request.



LADYLIFT HANDPIECE

Different calibres (from 100 to 1000 micron), lengths and tips (radial, ball, sphere, conic, flat) are available. The handpiece is sterilisable.
- Size: 165 mm
- Weight: 115 g



HF RING FIBER

High Focused Ring Fiber with 360° emission, single use.



INTRODUCTION KIT

Vein introduction kit complete of needle, dilator, j-tip guide wire, sterile. Disposable.



SURGICAL HANDPIECE

For contact treatment, dermosurgery and general surgery.



BARE FIBERS

Different calibres (from 400 to 1000 micron), lengths and tips (radial, ball, sphere, conic, flat) are available.
1- sterile for single use and
2- not sterile for multiple use



HEMOFIBER

Frontal and annular emission for hemorrhoidectomy, single use. Autoclavable handpiece for insertion.



MULTI-THERAPY HANDPIECE

For photobiomodulation, High Level Laser Therapy, inhibition of keloids. Quasi contact mode. Spot 40 mm.



MULTI-THERAPY FLAT HANDPIECE

Flat wave for same applications as Multitherapy Handpiece. It allows to be always focused from 0 to 30 cm distance. Available in 3 spot sizes: 5, 10, 20 mm.

OTHER ACCESSORIES



SMART TROLLEY

For an easy and safe transportation.



CANNULAS - Of different dimensions and calibres available upon request.

SMART TROLLEY - For an easy and safe transportation.

INFILTRATION PUMP - For local tumescent anaesthesia.

KIT FIBER MAINTENANCE - Equipped with fiber stripper and dedicated scissors.

COOLING SYSTEMS Fixed, portable, low cost.

PATIENT EYE SHIELDS Also intraocular and single use.

GOGGLES FOR OPERATOR AND PATIENT



LASEMAR® 1500
is available in
SILVER, BLACK and GOLD.



LASEMAR® 1500 - TECHNICAL FEATURES

Wavelength (nm)	1470 nm
Laser	High Power Diode (GaAs)
Preselected programmes	Advanced software with experienced protocols to be manually customized
Pulse duration (Ton-Off)	Adjustable from 1 to 9000 msec - step 1 ms
Number of pulses per sequence (single and pulsed mode)	From 1 to 100 - step one
Interval between pulse sequence (pulsed mode)	Adjustable 1 ms - 10 sec.
Operation mode	Single pulse mode - Pulsed mode - Continuous mode
Cooling system	Air cooling system combined with Peltier's Cells
Aiming beam	Red - 635 nm - 5 mw
Electrical power	110 - 230 V 50/60 Hz
Absorbed power	300 VA peak (adapted to domestic electric standard)
In compliance with	<div> <div>ISO 9001</div> <div>ISO 13485</div> <div>93/42/CEE</div> <div>CEI EN 60601-1</div> </div> <div> <div>CEI EN 60601-2-22</div> <div>CEI EN 60601-1-4</div> <div>CEI EN 60825-1</div> <div>CEI EN 60601-1-2</div> </div>
Weight and dimensions	8.5 kg - 30.5 x 35 x 15.5 cm
Production	Made in Italy



For more information about applications and accessories of **LASEMAR® 1500**, scan the QR - code with your tablet or smartphone.



Eufoton Srl
Via Flavia 23/1 - 34148 Trieste - Italy
Ph. +39 040 9899082 - Fax +39 040 9890555
www.eufoton.com - info@eufoton.com



Before and after photographs used in this brochure are courtesy of L. Campanini MD, D. Cassuto MD, A. Crippa MD, R. Dell'Aerzato MD, L. Scimall MD, Z. Zygajedic MD, F. Zini MD.

CALICUT SURGICALS EX-IM

43/2824, Fas Apartments, Kannur Road,
Calicut - 673 001, Kerala, India, Tel : +91 495 2361387
Telefax : +91 495 2768967
Mobile : 9847001091, 7025777999, 9349901091
E-mail : calisurg1@gmail.com, exim@calicutsurgicals.com
www.calicutsurgicals.com

LM

LASEMAR® 1500
FOURTH LASER GENERATION

1500

THE MOST VERSATILE
1470 NM LASER



PROCTOLOGY | VASCULAR SURGERY | GENERAL SURGERY
LASER ASSISTED LIPOLYSIS | FRACTIONAL NON-ABLATIVE SKIN REJUVENATION
| GYNECOLOGY | THERAPY

LASEMAR® 1500 for fractional rejuvenation, laser assisted lipolysis and vascular surgery.

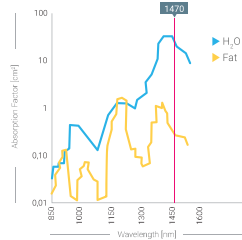


www.eufoton.com

1470 NM: THE WAVELENGTH GOLD STANDARD FOR WATER AND FAT

LASEmaR® 1500 is the ideal laser for aesthetic medicine, plastic surgery and endovenous phlebological surgery. In plastic/aesthetic surgery the phenomenon, caused by its specific wavelength, is a simple and quick emulsion of fat for the laser assisted lipolysis. The use of a lower level of energy applied in Endolift adds up the clear benefits of skin tightening.

LASEmaR® 1500 is applied for fractional rejuvenation and the treatment of acne scars, thanks to the LIGHTSCAN. In phlebological surgery LASEmaR® 1500 at 1470nm is known as the present gold standard for the EVLA (Endovenous Laser Ablation) in the outpatient elimination of saphenous reflux.



ADVANTAGES

- **Multifunctionality** - changing its handpieces and preset protocols, the laser is immediately usable for all the different treatments.
- **DPC - Dynamic Pulse Control**, maximization of the concept of selective photocoagulation for water and fat.
- **Absolute portability** thanks to the smart trolley.
- **Software** - all the treatments are preset and adjustable thanks to the easy and intuitive software.
- **Security** - the software permits to set the target parameters, warning the operator of its achievement with different voiced feedbacks, without the necessity of diverting the attention from the patient.
- **Self diagnosis** - principal circuits are continuously supervised from a security system, which informs the operator of the eventual anomalies and whenever it is necessary, it stops automatically the emission.
- **Ordinary maintenance** is not necessary and there is no need of consumption materials.
- **Working capacity** of different hours per day without any problem of overheating.

APPLICATIONS

PHLEBOLOGICAL SURGERY

EVLA - Endovenous Laser Ablation.

Thanks to the high water absorption LASEmaR® 1500 permits a better endovenous occlusion applying lower energetic levels LEED (Linear Endovenous Energy Density).

Phlebological indications:

- Treatment of the reflux of the great and small saphena
- Treatment of the periulcerosa varices
- Treatment of fractional debriement of venous ulcers.
- Photobiomodulation of venous ulcers.

SAPHENOUS VEIN: Before - after



GENERAL AND PROCTOLOGICAL SURGERY

Minimally invasive general and proctological surgery.

HEMORRHOIDECTOMY

HemoFiber is a specially designed probes that shoots frontally and radially for minimal invasive of hemorrhoids of grade 3 and 4 with retractable or fixed prolapse, achieving obliteration and shrinkage of tissue with limited complications preserving the musculus sphincter ani internus and the mucosa.

ANAL FISTULAS

pF Ring fibers allows the closure of the fistula preserving the sphincter, without the need for medication and with a rapid return to daily routine.

HIGH LEVEL LASER THERAPY AND VULNOLOGY

With the Multi-Therapy Handpiece, LASEmaR® 1500 is applicable for photobiomodulation of wounds and ulcers, while through the fractional scanner LIGHTSCAN it can be used for surgical debriement.

HYPERHIDROSIS

Laser sweat ablation is a procedure to stop sweating from the armpits.

Hemorrhoids - before and after



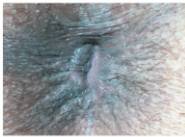
First Contact



Day 7 After Surgery



Immediately After Surgery



3 Weeks After Surgery



Day 1 After Surgery



3 Weeks After Surgery
Internal Findings

Pilonidal Sinus

Laser Coagulation of Pilonidal Sinus (LCP) is a highly effective and minimally invasive alternative to common surgery of Pilonidal Sinus with wide excision or Karydakis Plasty. With LCP complete healing is faster, there is little pain and no interruption to normal daily activities. The recurrence rate of LCP when compared to wide excision is 10% and 5% respectively. It can be easily performed in an outpatient surgery environment.

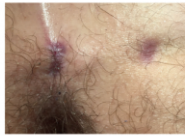
before and after



Before Surgery



Day 1 After Surgery



Week 7 After Surgery

LASER ASSISTED LIPOLYSIS

LASEmaR® 1500 is a fast and efficient laser for fat emulsion, skin tightening and contouring. It can be operated on face, neck, cheeks, abdomen, inner thighs, hips, gluteus, knees, arms and in all the fibrotic skins altered by ageing or by a previous operation of classic liposculpture. The results are already evident from the first treatment, but the optimal outcome will be reached after some months. It is possible a quick reabsorption of potential edemas, contusions and post intervention hematomas using the Multi-Therapy handpiece, thanks to its analgic and photobiomodulating action.

ADVANTAGES

- Local anaesthesia only.
- Absence of incisions thanks to the micro cannulas.
- The speed of the treatment is due to the immediate fat emulsion.
- Limited thermal damage of neighboring tissues.
- Different sterile kits for body areas.
- Rapid recovery of social and working activities.
- Visible results after one session.
- The device can be used both with frontal and radial fibers. Moreover, the radial emission permits a wider and even heat emission and distribution, which is a positive outcome for temperature control capabilities.

BODY: Before - after



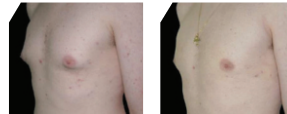
ABDOMEN: Before - after



GLUTEUS: Before - after



GYNECOMASTIA: Before - after



GYNECOLOGY

The protocol Ladylift is a safe treatment with no side effects for vaginal atrophy, stress urinary continence and tone of the vaginal walls. A new and innovative technique combines the action of the infrared laser and the Ladylift handpiece in order to accelerate the production and the remodeling of mucosa's collagen.

Applications: vaginal rejuvenation, urinary incontinence, vaginal atrophy, vaginal relaxation, diseases associated to postpartum alteration, HPV, cysts, dryness, itch.

